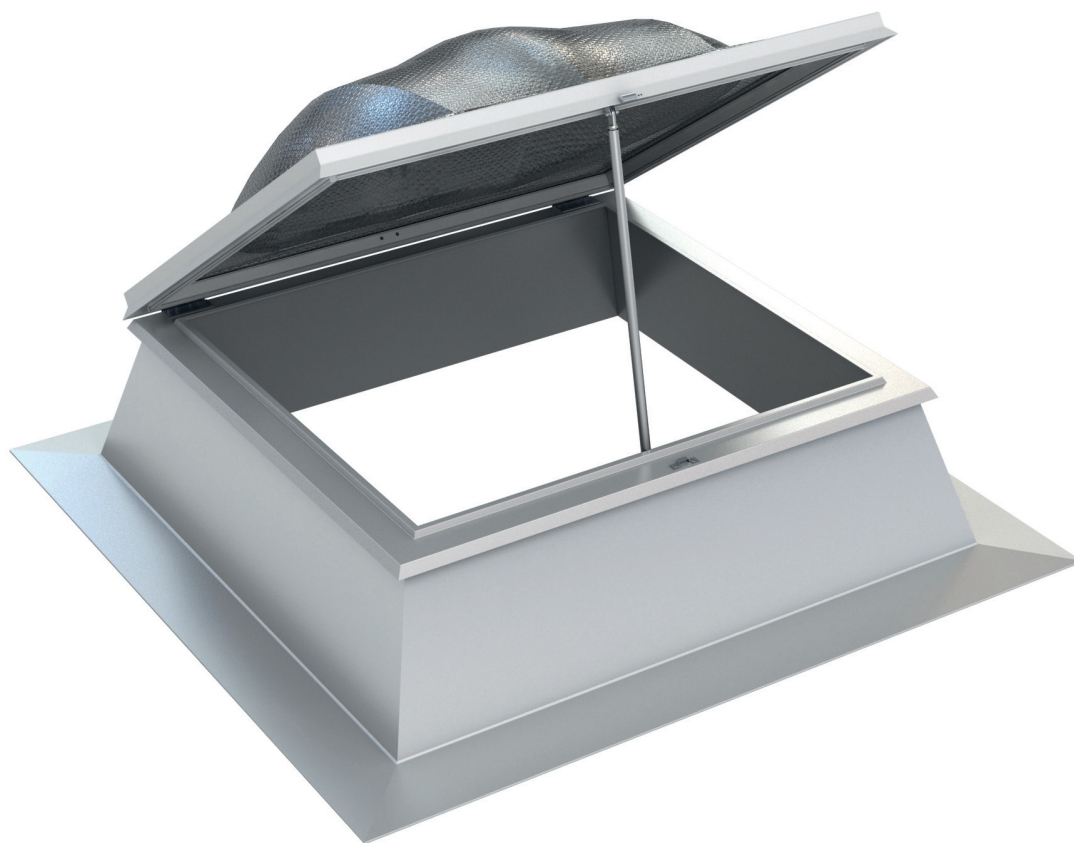


Light + Air
UK & Republic of Ireland

Protected by



Kingspan Day-Lite Kapture Air Data Sheet



Application

The Kingspan Kapture Air rooflight is suitable for use with all Kingspan insulated roof panels as well as other roof systems.

The rooflight is triple-glazed using specially designed polycarbonate layers to maximize both light transmission and diffusion.

The shape of the rooflight unit has been specially designed to capture the maximum level of light, even at low angles, so is ideal for use in geographical areas such as Northern Europe.

The rooflight base is manufactured in two materials:

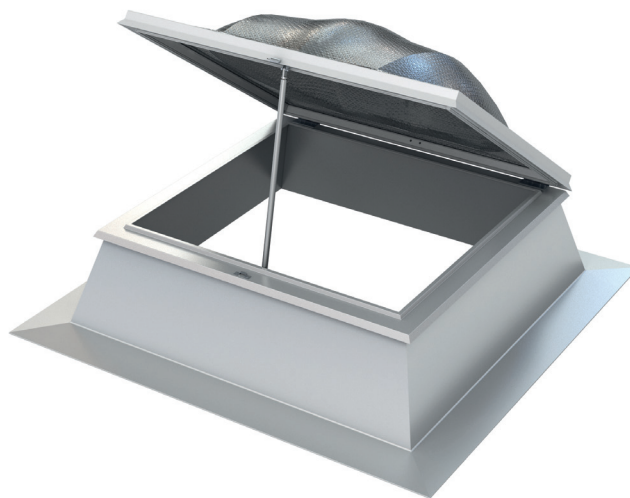
- Heating-insulating white PVC, which is available in heights of 15cm, 30cm or 50cm
- Galvanised steel, which is available in heights of 30cm, 40cm or 50cm.

The U-value of the skylight base is 1.3 W/m²K. The U-value of the polycarbonate glazing is 2.2 W/m²K.

The optional safety security fabricated wire mesh has been tested to withstand the impact of a 50kg weight (400mm in diameter) a from a height of 2400mm (BS EN 1873:2014 Class SB1200).

Features a motorised actuator for daily aeration and ventilation of rooflights, as well as for exploiting daylight.

Quick and easy installation. Can be installed in roofs with pitches up to 25° (max).



Dimensions

Product Reference	Roof Opening Length x Width (mm)	Skylight Base Interior Length x Width (mm)	Drive Lift Height (mm)	Free Ventilation Area m ²
KS700DLK	930 x 930	730 x 730	300	0.44
KS700DLK	930 x 930	730 x 730	500	0.73
KS1400DLK	1720 x 930	1520 x 730	300	0.68
KS1400DLK	1720 x 930	1520 x 730	500	1.13
KS1500DLK	1720 x 1790	1520 x 1590	300	0.93
KS1500DLK	1720 x 1790	1520 x 1590	500	1.56
KS2750DLK	1720 x 2996	1520 x 2796	300	1.29
KS2750DLK	1720 x 2996	1520 x 2796	500	2.16

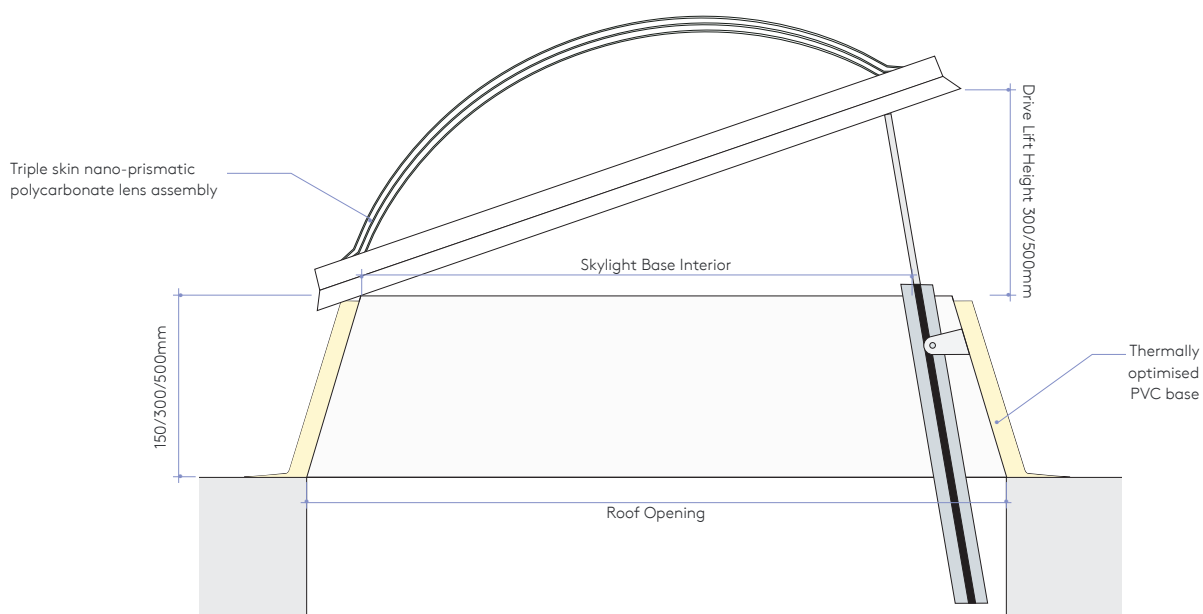
Product Reference	Diffusion	SHGC (g-value)	Light Transmittance (%)**
Standard	100%	0.70	83
Climate Control	100%	0.45	81

Note: **Light transmission according to EN 410 is as measured on 600mm x 600mm samples

Technical Specifications

Kingspan Day-Lite Kapture Air

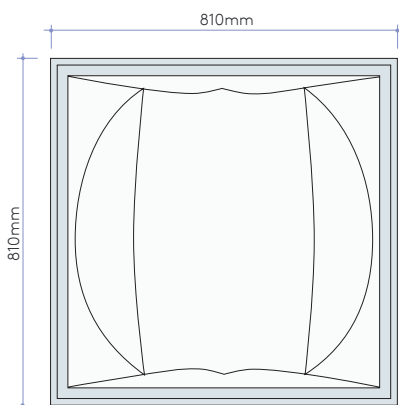
Base design with heat insulation all round, meets the requirements for daily aeration and ventilation and daylight utilisation.



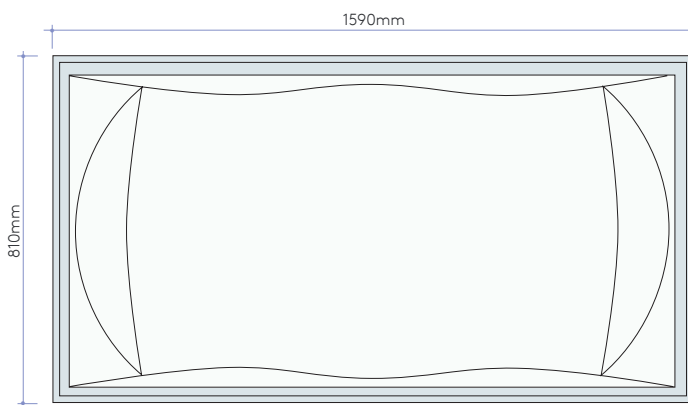
Kingspan Day-Lite Kapture Air

External Skylight Dimensions

KS700DLK-A



KS1400DLK-A

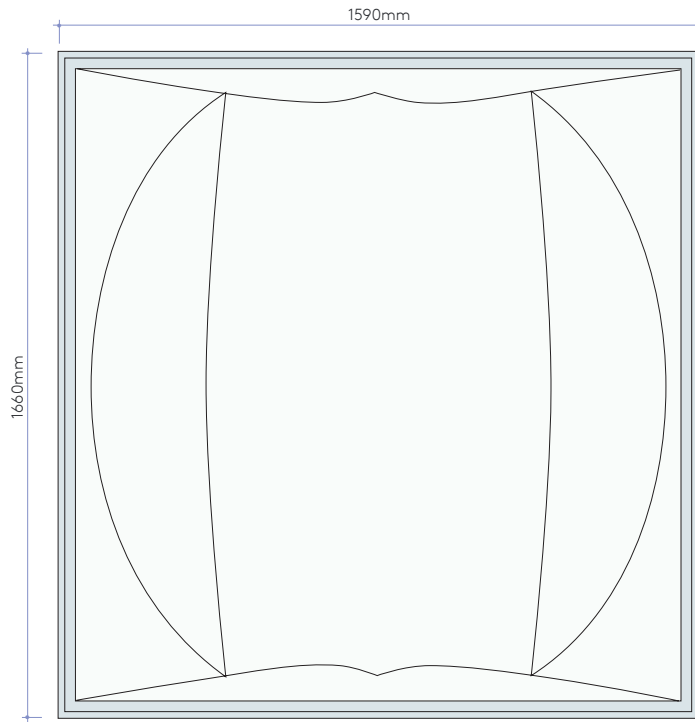


Technical Specifications

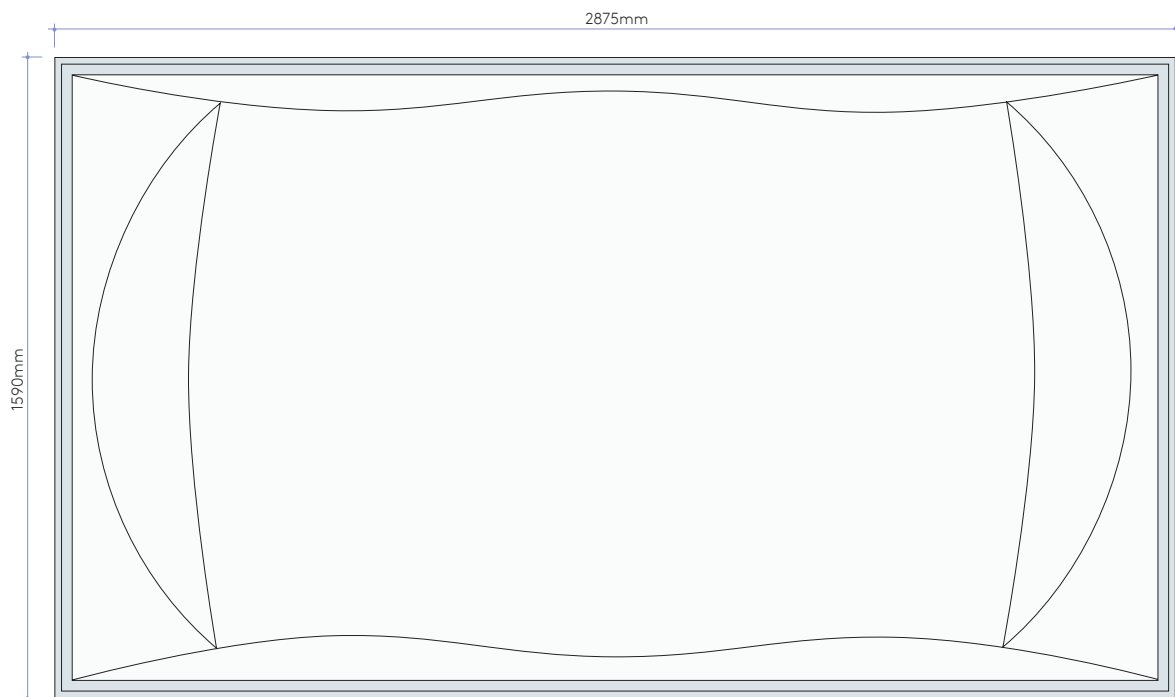
Kingspan Day-Lite Kapture Air

External Skylight Dimensions

KS1500DLK-A



KS2750DLK-A



Technical Specifications

H&S Classification

- Non-fragility to ACR [M]001: 2014 Class B, when installed as per Kingspan details
- Non-fragility to BS EN 1873:2014 Class SB1200 when installed as per Kingspan details

The security mesh fixed to the kerb achieves:

- Non-fragility to ACR [M]001: 2014 Class B, when installed as per Kingspan details
- Non-fragility to BS EN 1873:2014 Class SB1200 when installed as per Kingspan details
- Wind-load resistance to BS EN 1873:2005 Class UL 2500 for both the KS1400DLK-A and KS1500DLK-A
- Snow-load resistance to BS EN 1873:2005 Class DL 2500 for the KS1400DLK-A and Class DL 1500 for the KS1500DLK-A

Fire Performance

The Day-Lite Kapture polycarbonate achieves European class B-s1-d0 to EN13501, which can be regarded as an AA (National class) designation or BROOF(t4) (European class) in accordance with UK building regulations. Achieves B2 according to DIN 4102-1 and E according to DIN EN 13501-1

Materials

Factory-assembled skylight and base

- Triple-layer polycarbonate
- PVC frame

Optional additional features

- Steel security safety screen
- Visual warning light for control panel
- Wind and rain sensors

Product Tolerances

Length	+/-5mm
Squareness	+/-5mm
Width	+/-4mm

Fixing Details

Please refer to the standard details for fixing arrangements.
For further information, please contact Kingspan.

Packing

Kingspan Day-Lite Kapture rooflights are stacked weather side up (to minimise pack height). The top, bottom, sides and ends are protected with foam and timber packing and the entire pack is wrapped in plastic.

Quality & Durability

The Kingspan Day-Lite range is manufactured from the highest quality materials, using state-of-the-art production equipment to rigorous quality control standards; ensuring long term reliability and service life. All Kingspan Day-Lite products are fully compliant with ISO 9001, ISO 14001 and OHSAS/ISO 18001.

Guarantee

Kingspan Guarantee covering the structural and thermal performance for a period of up to 25 years.

Safe Storage

To ensure the Kingspan Day-Lite Kapture system remains in prime condition while stored on site, the following precautions should be taken.

At ground level:

- Allocate a safe, trade-free area; prevent personnel from walking over packs; and store all components of the Kingspan Day-Lite Kapture system in packaging and on a slight slope ensuring any penetrating rainwater drains off.

At roof level:

- Prior to and during installation, securely tie Kingspan Day-Lite Kapture packs to the roof structure to prevent movement; and keep Kingspan Day-Lite Kapture skylights covered to prevent penetration from rainwater.
- Kingspan Day-Lite Kapture skylights must be kept out of direct sunlight at all times prior to installation (at both ground and roof level). It is recommended to cover Kingspan Day-Lite Kapture packs with a non-transparent waterproof sheet.

Delivery

All deliveries (unless indicated otherwise) are by road transport to project site. Off-loading is the responsibility of the client.

UK

Kingspan Light + Air

Greenfield Business Park No.2
Greenfield, Holywell Flintshire,
CH8 7GJ

T: +44 (0) 1352 716100

F: +44 (0) 1352 710161

E: info@kingspanlightandair.com

www.kingspanlightandair.com

Ireland

Kingspan Light + Air

Carrickmacross Road,
Kingscourt, Co.Cavan

T: +353 (0) 420969 8500

F: +353 (0) 420969 8572

E: info@kingspanlightandair.com

www.kingspanlightandair.com

For the product offering in other markets
please contact your local sales representative
or visit www.kingspanlightandair.com

Care has been taken to ensure that the contents of this publication are accurate, but Kingspan Limited and its subsidiary companies do not accept responsibility for errors or for information that is found to be misleading. Suggestions for, or description of, the end use or application of products or methods of working are for information only and Kingspan Limited and its subsidiaries accept no liability in respect thereof.